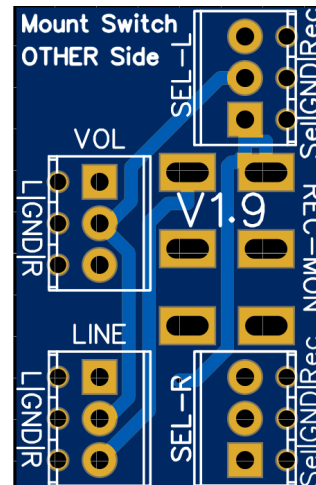


Application & Purpose:

Simple PCB for attaching a double pole toggle switch that can be used to override the currently-selected input with the record input. This is what is traditionally called a record loop or record monitor.

The record monitor switch is normally downstream of the sector switch and takes two inputs; the currently selected input and the record input. This is an optional part of a DIY installation.



Bare PCB

Specification:

Channels	Two (stereo)
Switch type	Double pole, two position, toggle switch
Switch Positions	Two: On and Off

Details:

A simple PCB for attaching a double-pole two-position switch for toggling between the currently selected input and the record input.

Connections:

Terminal	Pins	Purpose
SEL-L (left channel)	Sel GND Rec	Connects to the upstream selector switch. Sel is the selected input, GND is audio ground and Rec is the Record input
SEL-R (right channel)	Sel GND Rec	Connects to the upstream selector switch. Sel is the selected input, GND is audio ground and Rec is the Record input
VOL	L GND R	Connects to the downstream stage or volume control. Switch position determines whether this is the currently selected input or record input. L-left channel input. R-right channel input. GND is Audio Ground
LINE	L GND R	Provides a line-out connection. This is always the currently selected input, regardless of switch position. L-left channel input. R-right channel input. GND is Audio Ground

Parts List:

CONNECTORS: Connectors are not included and can be purchased and soldered on by the constructor. This is to give the constructor a choice of how they wire their own particular installation. Terminal block connectors are indicated in the list below in blue and can be swapped for equivalent 2.54mm pitch connectors e.g. Molex KK254 headers, which are provided to the constructor in self-wire kits.

Designator	Value/Spec	Qty	Supplier	Manufacturer	Manufacturer Part	Supplier Part
SWITCH-DPDTES	SWITCH-DPDTES	1	RS	RS-PRO	401-680	401-680
LEFT, RIGHT	3 Pole Terminal (self-wire only)	4	RS	RS-PRO	790-1092	790-1092

Parts available from [RS Online](#). Also try [Farnell](#), [Mouser](#) and other online suppliers.

Parts from different manufacturers can be substituted where spec is sufficient

Supplier trading names may differ by country.